



# 10 YEARS OF HISTORY...



- Technolife was founded to produce solutions that can compete in the security and information technology market, with its founders who have over 10 years of industry experience, strong and dynamic team, we follow all technological innovations around the world.
- Our company, with a very wide product range from entry level to project level, aims to be a solution partner for its customers in the technology field with its dynamic working team. Not only does it quickly organize the infrastructure necessary for projects, but it also adopts a mission to provide its customers with quality and fast service with its accumulated knowledge and experience.

# OUR BRANDS



*Technolife is our founding brand, providing integrated solutions in software and hardware since its beginning. With a focus on minimizing dependency on external sources, Technolife aims to provide flexible solutions for clients to build their own dynamic structures.*



*Security and Payment System is a framework solution that brings together security and payment systems under one roof. The brand aims to reduce dependence on external sources and provide a robust platform for clients to build their own systems.*

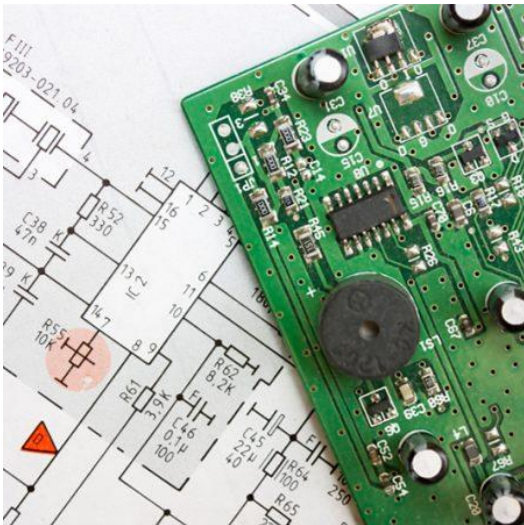


*MatrixLock, developed in 2020, is a strong and flexible solution that forms the backbone of our projects. It is equipped with various capabilities, such as modernizing environments, validator solutions, digital signatures, and managing access control points.*

## BLUETOOTH TECHNOLOGIES



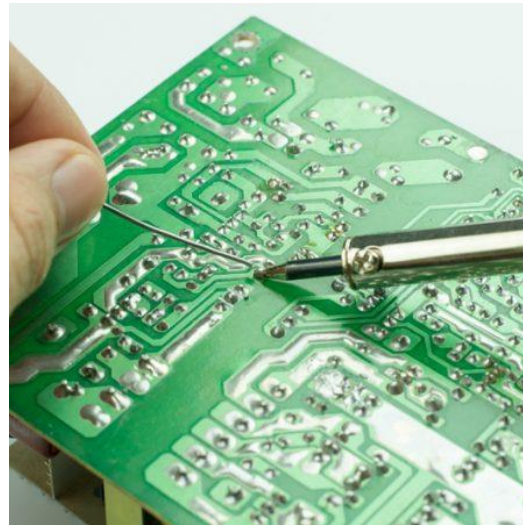
## PCB DESIGN AND MANUFACTURING



## RFID CARD TECHNOLOGIES



## CONTROL AND TEST



# SERVICES: R&D

*TECHNOLIFE carries its R&D activities with its own resources. We work to produce the right solutions at the most reasonable cost with our knowledge and technical strength. Our goal is to minimize our dependence on external sources in our projects.*



## CABLING SERVICES



## ASSEMBLY SERVICES



## SERVER SERVICES



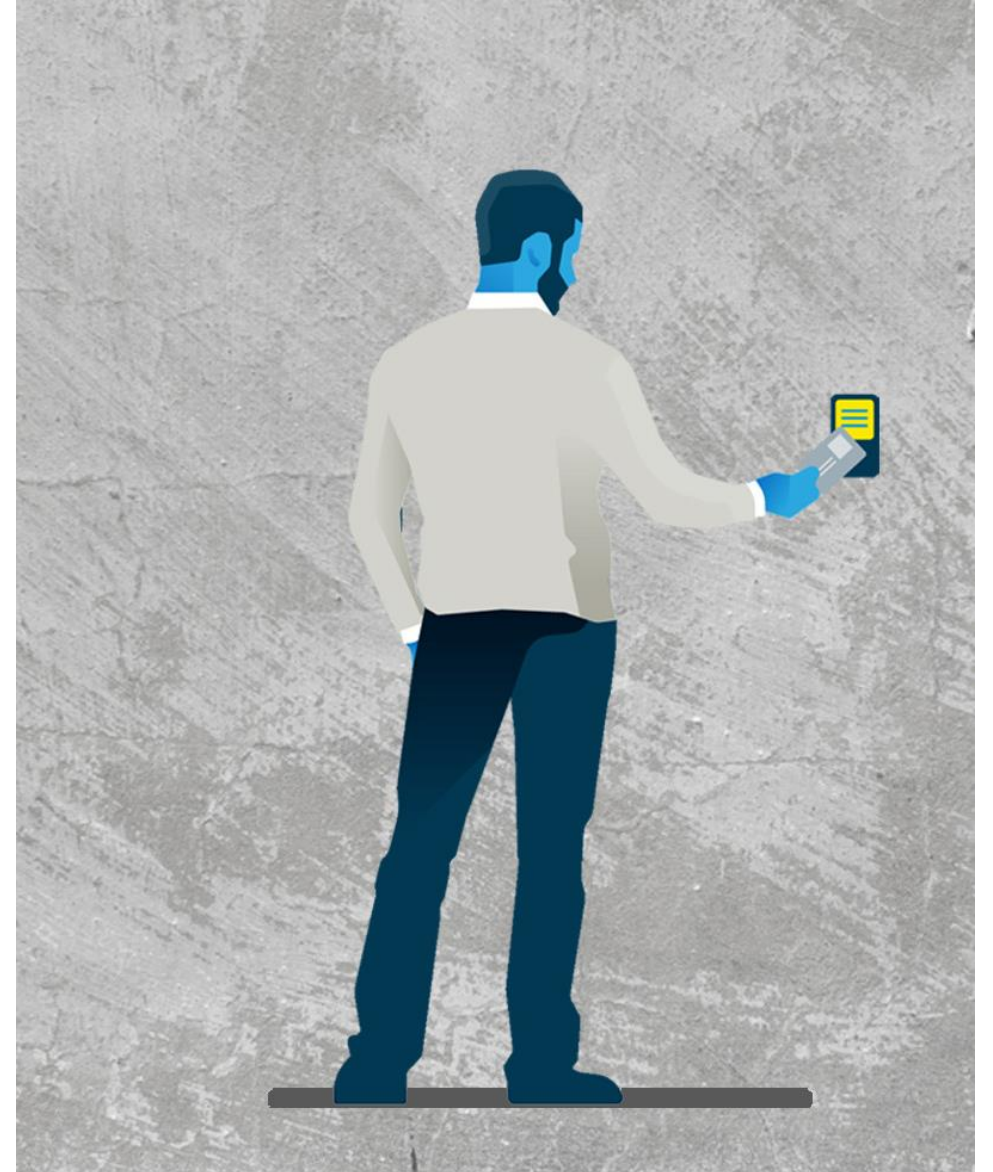
## REPAIR AND MAINTENANCE

# SERVICES: IT INFRASTRUCTURE

*TECHNOLIFE carries its R&D activities with its own resources. We work to produce the right solutions at the most reasonable cost with our knowledge and technical strength. Our goal is to minimize our dependence on external sources in our projects.*

# SOLUTIONS

- ACCESS CONTROL
- TIME ATTENDANCE
- INTEGRATED SMART CARD
- SELF SERVICE PAYMENT
- CURRENCY EXCHANGE
- PARKING
- SMART HOTEL



# ACCESS CONTROL

---

- Cutting edge management software that controls and authorizes the doors, turnstile passages. All the points of entry are controlled with integrated card reader and other biometric security hardware, which work with the system. High-end cryptography technologies ensure top-level security in the application area.





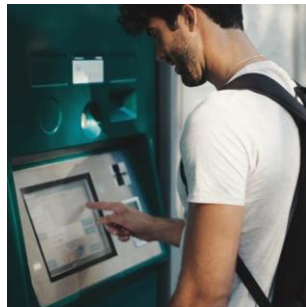
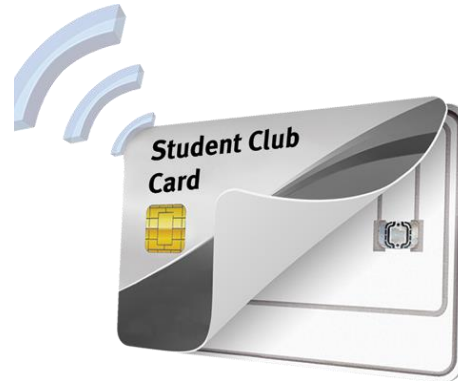
# TIME ATTENDANCE

## PERSONNEL TRACKING AND ATTENDANCE CONTROL SYSTEM

- Personnel Tracking and Attendance Control is the recording of an employee's time of entry and exit and calculation of reports such as attendance status, overtime, shift times, access permissions to specific areas within the company, and salary calculation based on these records through the program.

# SMART CARD SOLUTIONS

Cutting edge management software that controls and authorizes the doors, turnstile passages. All the points of entry are controlled with integrated card reader and other biometric security hardware, which work with the system. High-end cryptography technologies ensure top-level security in the application area.



- **CARD PRINTING MODULE**
  - A module created to manage the creation of users, card printing and subsequent processes in the system.
- **ACCESS CONTROL MODULE**
  - Control of turnstile and door passages.
- **CANTEEN AND PAYMENT MODULE**
  - Use smart cards in all spending points.
- **PERSONNEL TRACKING AND ATTENDANCE CONTROL MODULE**
  - Calculate the working performance and working hours of your staff.
- **VISITOR MODULE**
  - Record all visitors and restrict their movements within the institution.

# SELF SERVICE PAYMENT SOLUTIONS

## **ERGONOMIC CASE DESIGN**

A flawless design that offers all the needs of users together.

## **STRONG AND SECURE**

Has high security hardware with a special lock design.

## **OPTIONAL HARDWARE OPTIONS**

Can be customized for each project with selectable hardware options.

## **CREDIT CARD INTEGRATION**

Quick payment opportunities with compatibility with all banks, contact-based, contactless and NFC support.

## **INTERNAL CAMERA**

Record all transactions instantly with the integrated camera add-on.

## **CENTRAL MANAGEMENT AND REPORTING INTERFACES**

Instant access to real-time data through web-based management and reporting interfaces.

## **INTERCOM**

You can communicate with users during transactions with the internal intercom system and provide instant support.

## **HIGH-CAPACITY CASH HOLDERS**

You can provide service for a long time without going to the device with high-capacity cash holders.





- Designed for currency exchange, kiosks are designed to quickly finish smaller transactions for customers. They are used in public places such as airports, social life centers, retail market chains where currency needs to be resolved instantly. Currency ATMs allow individuals to perform unmanned transactions within certain purchase-sale limits without the need for any assistance or operation authority. The system also minimizes business costs and risks with its 100% counterfeit money separation feature.

# **SELF SERVICE CURRENCY EXCHANGE SOLUTION**

# PARKING SOLUTIONS

## TICKET VALIDATOR

- The ticket dispenser is suitable for fee-based parking lots-entry lanes. When the vehicle reaches the induction coil in front of the entry ticket dispenser, it is detected by the vehicle sensor and ready to issue a ticket card. After the driver presses the button, a parking ticket is issued suitable for delivery. Drivers can also directly enter the parking lot with an IC card or monthly rental card.

## TICKET COLLECTOR AND PAYMENT

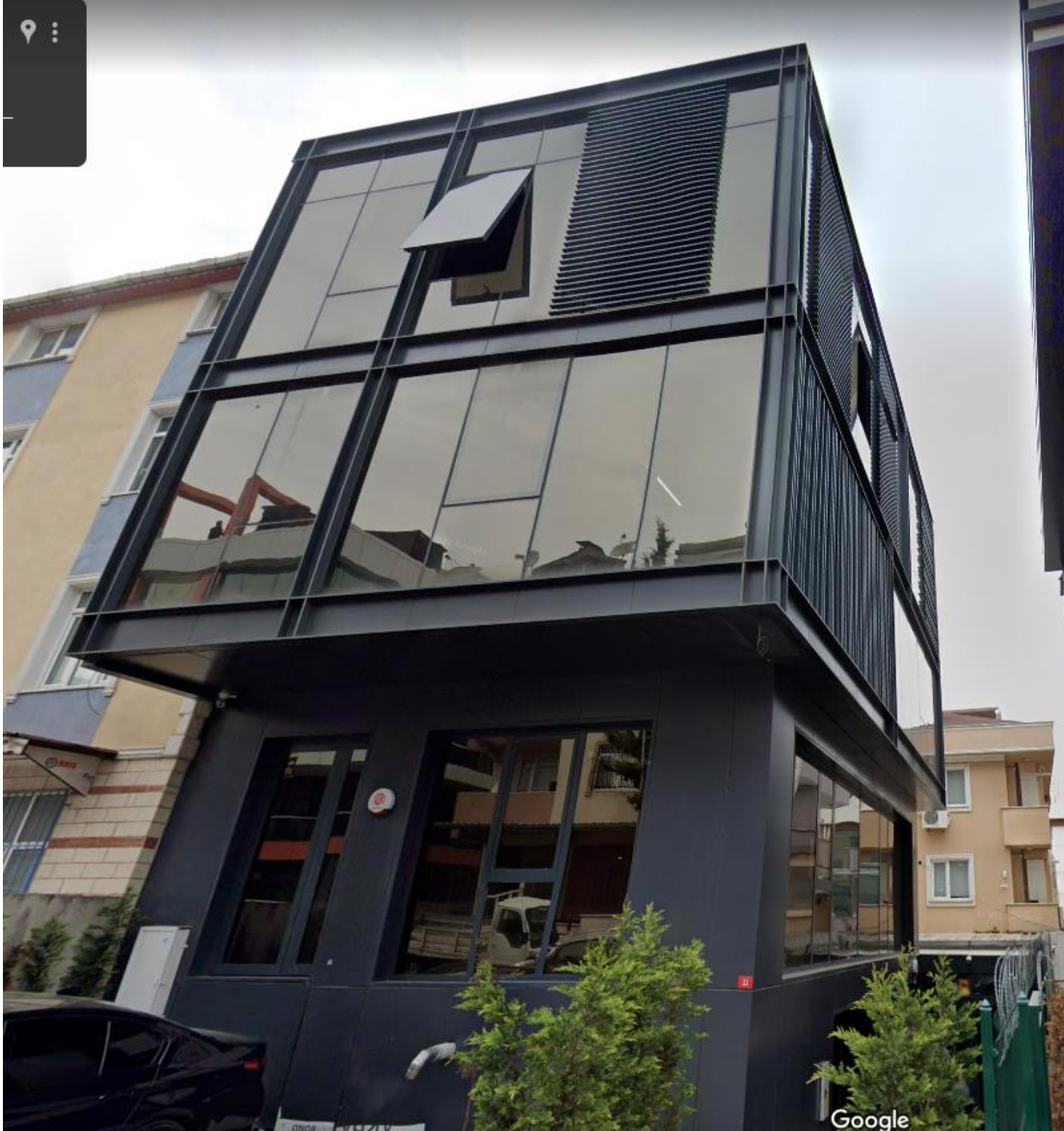
- Designed for automatic exit points, it offers flexible parking management options with pre-paid tickets or credit card and contactless (NFC) payment at the exit. It also provides time and personnel savings for businesses. Reservations or pre-approved visitors can pass through with controlled entry using QR codes.



# SMART HOTEL SOLUTION

- The hotel management software, fully developed on a web-based platform, is specially designed. With user-friendly interfaces, the management is practical, 100% secure
- With the modular structure of the system, room locks, as well as in-room safe deposit boxes and elevators, can be managed with a single guest card.





# CONTACT US

**Atatürk Mahallesi,**

**Erzincan Sokak No:11**

**34758 Ataşehir - İstanbul**

**+90 212 451 10 55**

**[technolife@technolife.com.tr](mailto:technolife@technolife.com.tr)**